

ALIGHT & WORKDAY

# Powering confident decisions for the Public Sector during your cloud transformation journey



**alight**

# Alight is the Workday partner Public Sector entities can trust for end-to-end cloud solutions, providing **insights** and **flexibility** to help navigate change and prepare for the future.

## Workday Advisory

We partner with you to understand your specific HR, finance, and payroll operations and make design recommendations tailored to your organization's unique needs, standards and regulations.

### Pre-deployment

Collaborate with our experts to navigate through what Workday can do for you and map a path toward Public Sector HR success with the help of our strategic consulting services

#### Benefits:

- Worker experience strategy and design thinking
- Journey mapping of key processes
- Change strategy to identify key stakeholder groups and audiences
- Service delivery and operating model optimization
- Governance to ensure ongoing compliance and success well beyond go-live
- Financial technology roadmaps for moving operations to the cloud
- Intelligent automation strategy and maturity assessments

### Deployment

Help your end-users seamlessly transition to Workday to increase user adoption and employee engagement with the support of our change management experts.

#### Benefits:

- Stakeholder identification and engagement
- Marketing and creative communication plans
- Change and organizational impact analysis
- Training development and support

### Post go-live

Enable a successful Workday journey for your people, processes and technology by tapping into our operational experience and expertise.

#### Benefits:

- Payroll and HCM operational readiness (before go-live end-to-end testing)
- Operational effectiveness assessments (6-9 months post go-live)
- End-to-end integrations review
- Payroll and HCM stabilization consulting
- Year-end process planning and reports
- Workday payroll operational training (before go-live end-to-end testing or post go-live support)

# Workday Deployment

Expedite your HR, finance and payroll transformation with industry leading tools, best practices, and accelerators specifically tailored for the Public Sector.

## Workday Human Capital Management

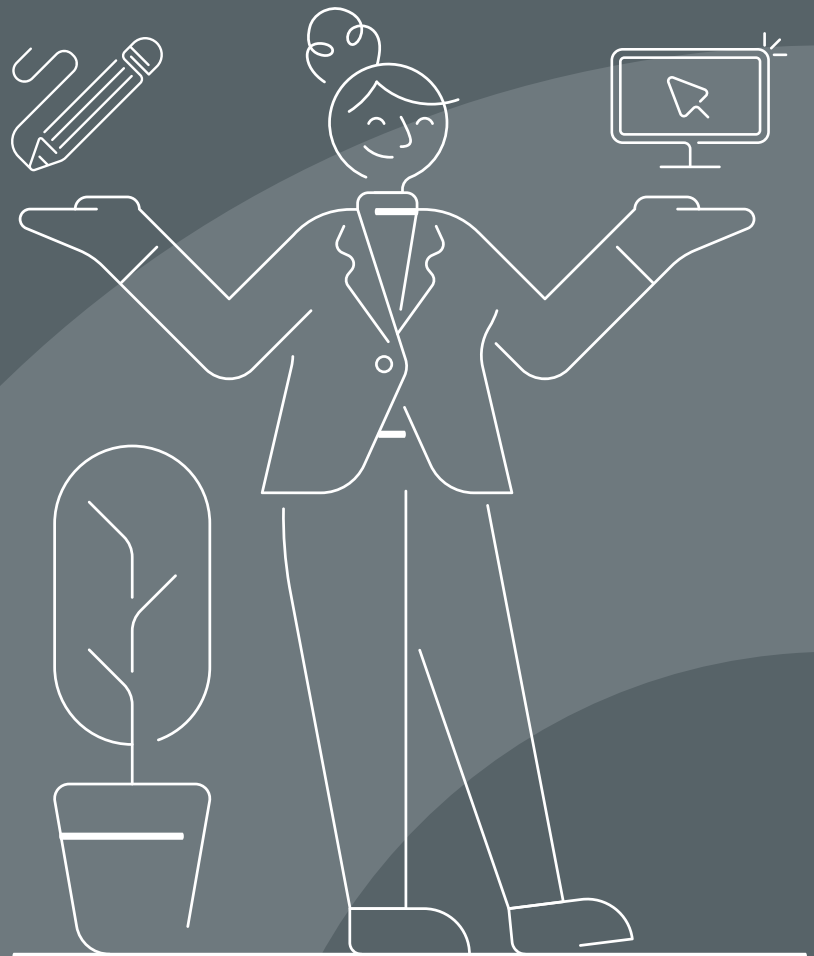
Leverage our 25+ year history in operating HCM technology to configure your platform to meet the unique needs of your organization. Our deep understanding of HR leaders' and HR administrators' needs ensures you're set for long-term success.

## Workday Financial Management

Finance transformation in the public sector can be complex with old legacy systems and manual processes to consider. We partner with you to embed efficiency and automation to give you more control and visibility into your accounting, sourcing, grants management, capital projects, and more.

## Workday Payroll

Alight is an industry leading global payroll provider and the only Workday partner that you can count on to deploy and operate Workday Payroll in the UK, US, Canada, and France. Bring your HR and Payroll harmoniously together for a connected experience and enhanced data insights.



# Workday Optimization

As a public sector organization, your employees are critical to your success in serving the public. That is why it is essential to optimize your Workday experience to ensure maximum efficiency and productivity. Gain access to experienced resources, deep technical knowledge, and optimization guidance so you can continue to get the most out of Workday, today and in the future.

## Support Desk

Receive day-to-day production support, along with insights, best practices, and analytics to drive business case realization.

### Benefits:

- Urgent production support and technical questions
- Minor platform enhancements
- Discretionary pool of hours

## Hours Flex

Gain flexible access to expertise to help drive business initiatives, optimization efforts, and ongoing enhancements for enhanced ROI.

### Benefits:

- Discretionary pool of hours
- Business initiative support
- Business process, integration, and reporting optimization
- Strategic road mapping

## Tenant Optimizer

Give your technology platform a health check to optimize performance, increase efficiency, and streamline processes for a more engaging user experience.

### Benefits:

- Assessment, recommendations, and roadmap to find greater platform usage
- Domain expertise
- Discretionary hours pool

## Release Updater

Get expert support integrating, updating, testing, and managing mandatory and optional features included in bi-annual releases.

### Benefits:

- Feature release impact analysis
- Mandatory change configuration
- Business process and integration regression testing
- Optional feature enablement

## Enhanced AMS

Receive ongoing production and enhancement support with configuration and integration services to complement your support team.

### Benefits:

- Urgent production support issues and technical questions
- Enhancements to configuration, integrations, and reports
- Strategic planning and road mapping
- Release management and automated regression testing
- Domain expert advisory support

## Total AMS

Get fully managed support and data driven insights, along with strategic governance for enterprise technology transformation.

### Benefits:

- End-to-end support of configuration and integrations
- Release management and integration monitoring
- Issue triage and troubleshooting
- Strategic road mapping
- Domain expertise

## Optimization and Transformation

With a certified team of experts by your side, empower your organization to do more with Workday than you ever have before.

### Benefits:

- Future Workday road mapping
- Integrations with other business aspects
- Client-specific dashboard buildouts
- Workday preparation post-deployment

# Payroll

Payroll is one of the most important and complex processes, especially in the public sector. Your employees are often responsible for critical services that effect the safety and well-being of your community and they rely on accurate paychecks to meet their financial obligations. While payroll is often a practice that is overlooked, your employee experience and their financial wellbeing is riding on it, and now it can be simpler than ever.

## Payroll Services

Ensuring compliance with payroll regulations and requirements can be complex and time-consuming. Remove the risk and complexity of running Workday Payroll in house with flexibly tiered payroll services to deliver accurate and timely payroll, optimize performance, and deliver greater value.

### Benefits:

- Gross to net and post payroll processing
- Data corrections and mass loads
- Compensation, benefit, and talent annual cycles
- Legal and compliance expertise
- In tenant Workday processing

## Alight Digital Wallet

An Earned Wage Access solution that gives your employees flexibility over when and how they get paid. With Alight Digital Wallet, you can reduce the financial stress of waiting for payday.

### Benefits:

- Improve hiring and retention with a competitive benefit
- Give your employees financial flexibility at low-to-no-cost
- Reduce employee financial stress
- Seamlessly integrate with existing systems



# Workforce Services

Gain access to services that help you to deliver an enhanced employee experience for a happier and healthier workforce.

## HR Administration

We act as one with your team to manage and administer your HR processes, so you can focus on bigger, more strategic projects for your business.

### Benefits:

- Develop confidence in your data through our data quality management (DQM) solutions
- Digital journey planning to ensure your HR system and processes continuously meet your employee needs
- Confidence that your employee's needs are handled with care and excellence

## Customer Care

Our call centers, chat services and self-service request platforms help your people get answers to their most pressing questions, on their preferred channels.

### Benefits:

- Intuitive and easily accessible help and support
- Intelligent chatbot for immediate assistance
- Help your employees feel in control of their HR experience

## Workday Benefits Administration

Leverage our 30-year legacy of being a premier health and welfare benefits administration provider so you can focus on your overall benefits policies, design, and strategy.

### Benefits:

- In-tenant processing
- Open enrolment and ongoing benefit event processing
- Benefit integration monitoring
- Participant case resolution
- Federal and State ACA administration

# Workday Automated Testing

Alight's testing automation tool powered by Cloudbera Genie is the fastest growing testing solution developed exclusively for Workday customers. With the ability to reduce time and effort by up to 80%, this tool can enable your team to channel their expertise towards other critical business requirements.

By adopting this cutting-edge solution as a public sector entity, you can streamline your testing processes, enhance operational efficiency, and optimize resource utilization, thereby achieving organizational goals more effectively.

## Deployment

You have made a significant investment in Workday, and we understand how important your deployment is for the success of your organization. With our testing tool and the help of our expert team, we will ensure your system is operating correctly and your business processes are configured accurately so you can be up and running without delays.

## Optimization

Our call centers, chat services and self-service request platforms help your people get answers to their most pressing questions, on their preferred channels.

### Benefits:

- Intuitive and easily accessible help and support
- Intelligent chatbot for immediate assistance
- Help your employees feel in control of their HR experience

# Analytics & Reporting

At Alight, we understand the importance of accurate and timely reporting, analytics, and dashboards for your organization. We'll help you get the most out of your data, allowing your key stakeholders to make informed decisions that support your strategic goals.

Workday and Alight have partnered together to deliver a library of Workday Extend solutions designed to simplify HR processes, enhance the Workday integration, and improve and streamline common day-to-day tasks, typically requiring manual intervention.

## Workday Extend

Leverage our library of 25+ Workday Extend solutions designed to simplify the IT landscape, enhance your Workday experience, and streamline common day-to-day tasks, typically requiring manual intervention. You can also access a team of IT experts with the skills to build a custom solution unique to organization's needs.

## Workday Prism Analytics

Access enhanced data and insights to help you make impactful decisions about your business, faster. We provide you with industry tested reports, visualization, and dashboards to help you quickly gain valuable insights from your data.

## Workday Adaptive Planning

Collaboratively plan across your entire organization and gain business agility with Workday Adaptive Planning. Our award-winning team of Workday Adaptive Planning certified consultants can help you transform your planning, budgeting, and forecasting processes.

# alight

Alight helps organizations to drive improved business results and an enhanced employee experience through HR, finance, and payroll transformation. We cut through the complexities of your business challenges to achieve optimal system design, process optimization and operational excellence. Forging a long-lasting partnership beyond deployment, you can count on Alight as your trusted partner for continuous guidance, expertise and innovation to maximize the value of your Workday investment.

For more information visit [alight.com/workday](https://alight.com/workday)